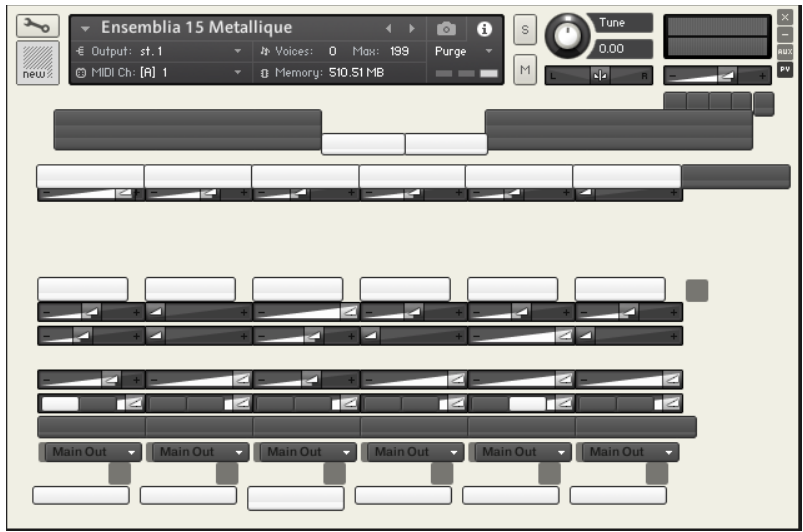
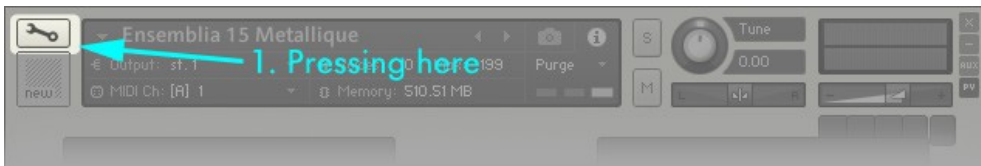


Missing GUI elements.

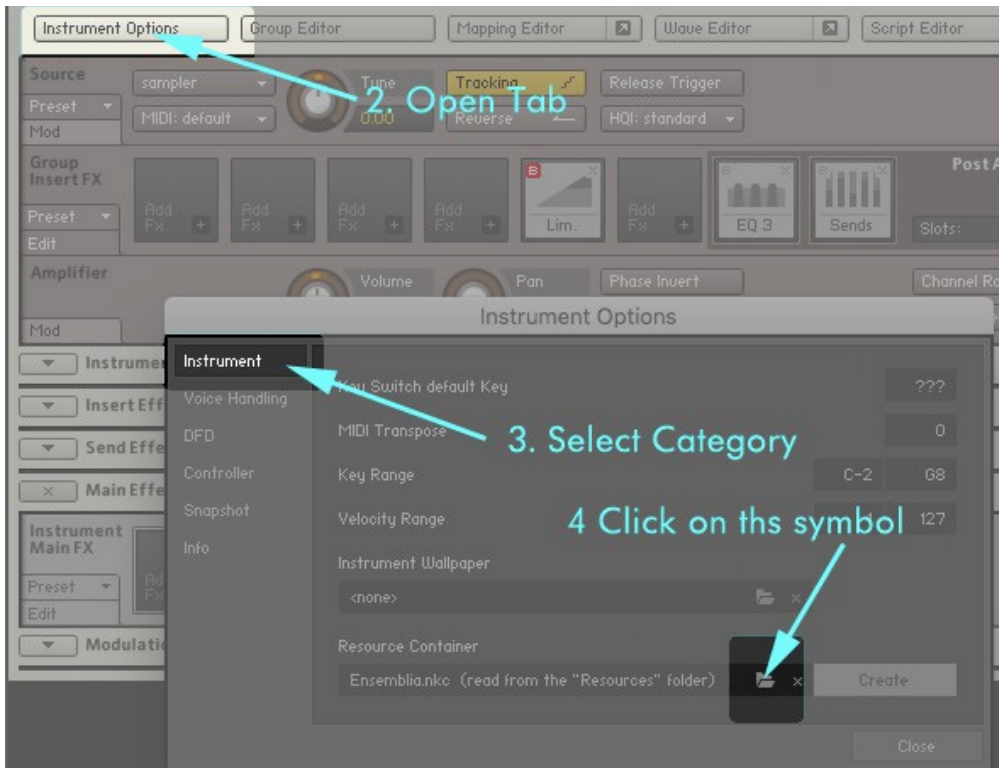
If it should happen that your instrument GUI and its elements are no longer recognizable when updating to K6, please follow these steps to "refresh" it:



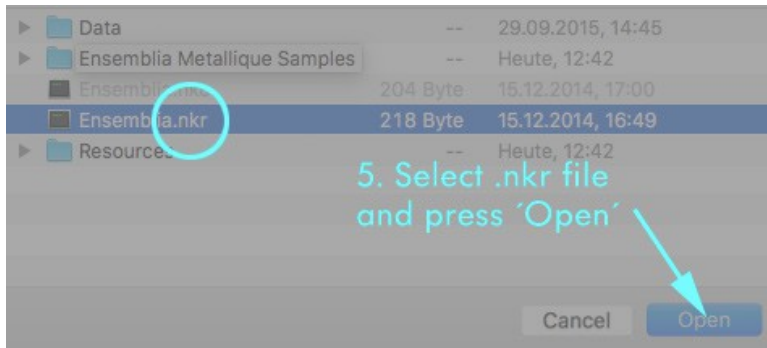
1. open the software by pressing the screw key. This will bring you to the edit level



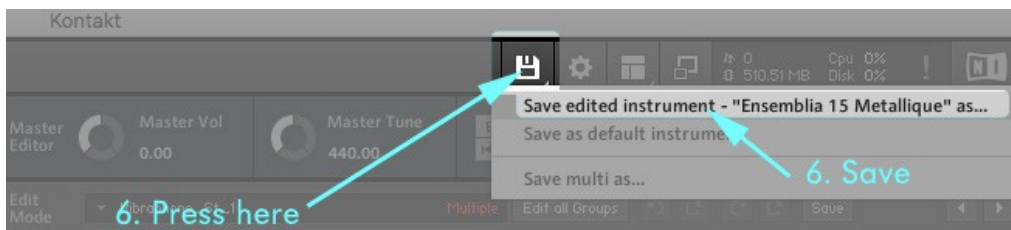
- 2. Open the Instrument Options by clicking on the 'Instrument Options' tab
- 3. Select the subcategory 'Instrument'
- 4. Click on the folder symbol in the bottom line (marked red)



5. A dialog will open and please select the corresponding nkr file and confirm it



6. click on the hard disk icon of Kontakt save your instrument file or if you want to keep



7. close your file (without saving) and open the newly saved instrument file.